

Gain a new perspective on  
corrugated cardboard packaging  
with automation technology.

# Box On Demand Packaging Solutions

Any Box. Sized Right.  
Every time.

T: 03 9301 8800  
E: sales@abbe.com.au

[www.abbe.com.au](http://www.abbe.com.au)



---

Please contact our Account Managers for more information.

**03 9301 8800**

Abbe Corrugated is proudly Australian and a family owned business, with industry ties since 1954.

Providing locally manufactured and recyclable products to customers every day.



**A family  
owned  
Australian  
business**

Explore our full capabilities and expertise at

**abbe.com.au**

CONTENTS

---

|   |              |
|---|--------------|
| <b>On-Demand Packaging</b>                  | <b>2-3</b>   |
| <b>Feed the solution with ABBE</b>          | <b>4-5</b>   |
| <b>The Tech</b>                             | <b>6-9</b>   |
| <b>Redefining Productivity Efficiencies</b> | <b>10-11</b> |
| <b>Inspiring Packaging Solutions</b>        | <b>12-13</b> |
| <b>Unsurpassed Capabilities</b>             | <b>14-15</b> |

---

---

Boxes On-Demand

# “What if every box was the perfect size for every product?”

**Any Box. Sized Right.**  
**Every Time.**

---

Abbe Corrugated Pty Ltd, an industry leader in corrugated cardboard solutions, brings world-class technology in “on-demand” box making equipment and systems.

Partnering with world-leading innovators Panotec and CMC Machinery, we supply your business with the revolutionary on-demand packaging system and corrugated fanfold material, so your business can make the right-sized shipping box in your own facility, every time.

---

Designed for companies that ship simple to a complex and constantly shifting mix of product.

# On-Demand Packaging, Why use it?

---

**Box on Demand by Abbe Corrugated will work with your business to design the perfect solution so as to maximise productivity and cost savings in labour and materials, in your own facility.**

No need to procure and store “stock” boxes of different sizes, as the boxes are created specific to the products being packaged in, all in real-time.





# **BOX ON DEMAND**<sup>™</sup> AUSTRALIA

Any Box. Sized Right. **Every Time.**

## **Reduce your:**

### **Material costs**

Boxes are custom made according to the product being shipped.

### **Box management**

Never run out of the correct box size, never store rarely used sizes.

### **Freight & shipping costs**

Reduce shipping costs and dimensional weight charges.

### **Warehouse Space**

Only fanfold stacks to be stored.

### **Excess and waste**

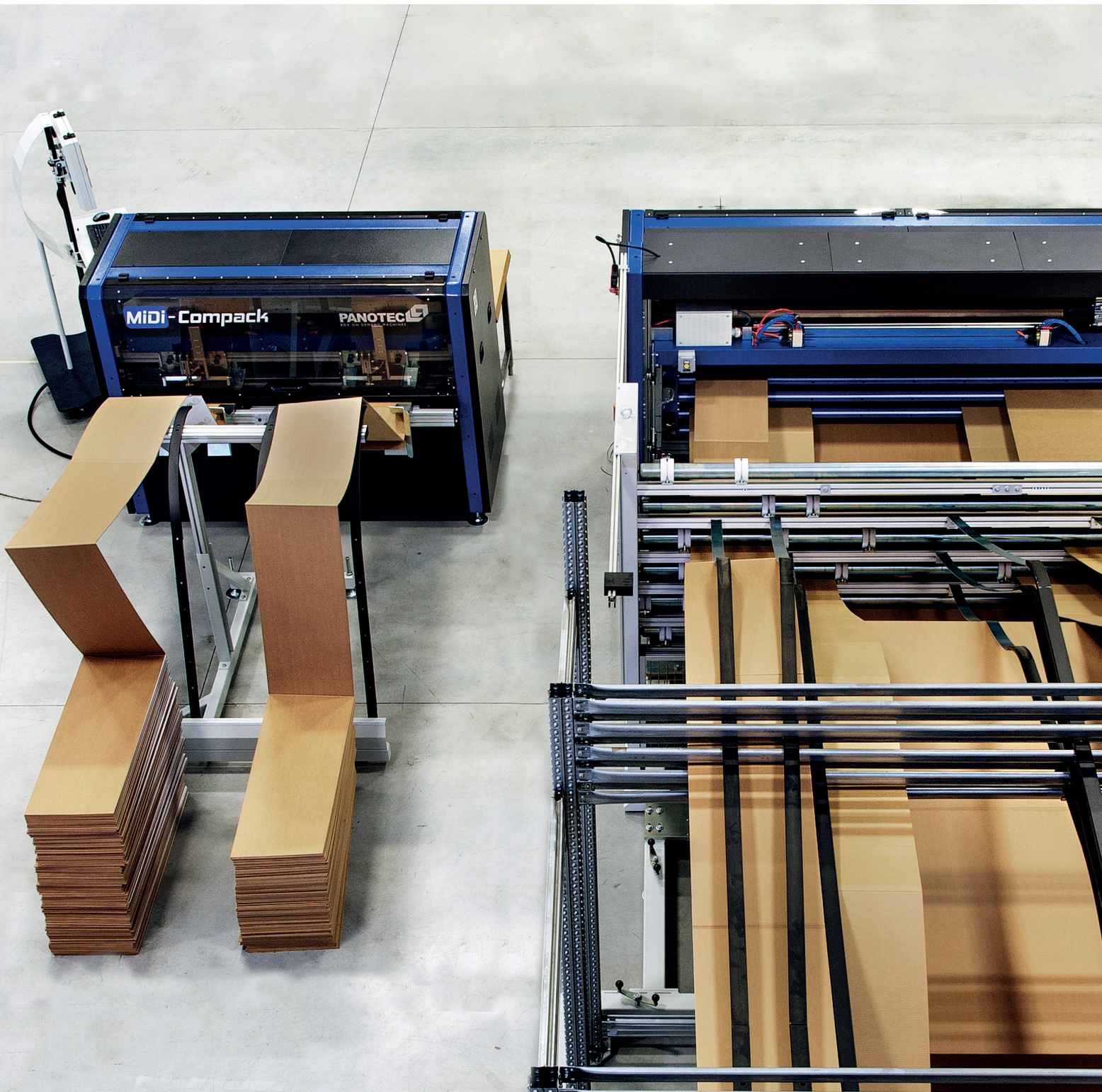
Dramatically reduce or eliminate the need for filler materials.

#### **Ideal for B2B/B2C:**

- ▶ E-commerce & Online Retailers
- ▶ Furniture & Cabinetry
- ▶ Logistics & 3PL Fulfilment
- ▶ Warehouse & Distribution
- ▶ Automotive & Spare Parts
- ▶ POS Displays & Print Management

---

Cardboard Fanfold - Continuous, cost-effective and highly versatile.





# Feed the solution with ABBE

---

**Manufactured in-house at ABBE, fanfold corrugated board is an essential component for the on-demand packaging system.**

Fanfold is a continuous corrugated material that fits perfectly in a wide range of packaging processes, to create infinite range of box styles and sizes.

By printing your brand directly onto the Fanfold, your packaging becomes a cost-effective and versatile marketing tool.

---

[Speak to our team to discover more!](#)

03 9301 8800

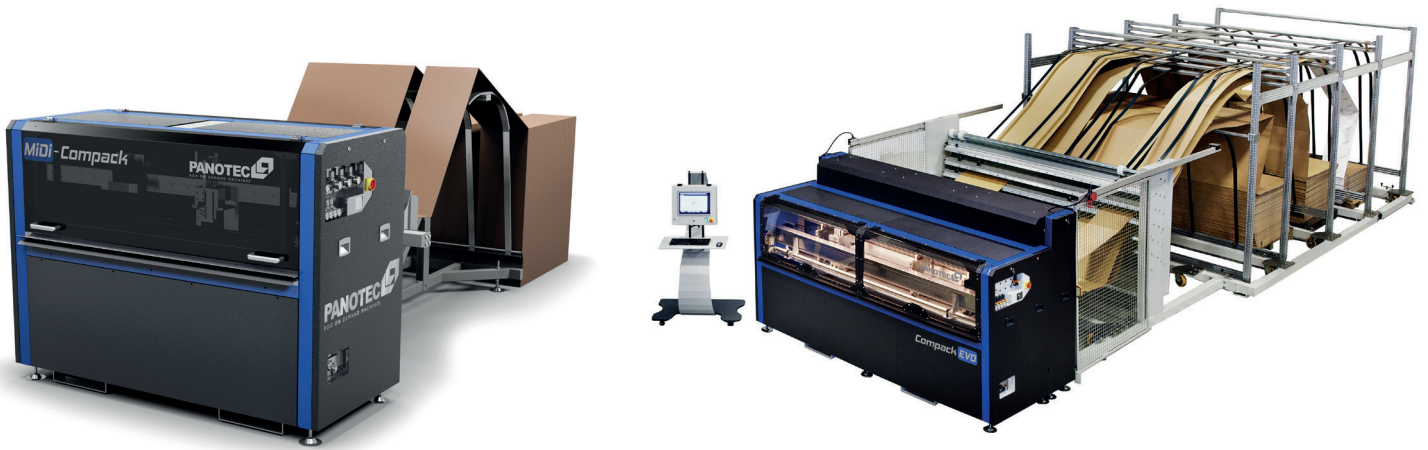
[sales@abbe.com.au](mailto:sales@abbe.com.au)

[www.abbe.com.au](http://www.abbe.com.au)

Powered by



# The Tech



## Compact MIDI 1.4

High performance in a small space, for small to medium sized boxes.

Compact MIDI is equipped with a transversal unit and up to 12 longitudinal units, which position automatically for cutting and creasing during the production process.

While maintaining a small physical footprint, MIDI can accommodate up to 2 side by side fanfold sources at a board width of 1.4 metres. Supported with a full software suite supporting data interchange with WMS and ERP systems.

## Compact EVO 2.5

New design, high performing and absolutely versatile.

The basic model is equipped with a single fanfold magazine positioned behind the machine. The optional Automated Magazine, provides 2, 3, or 4 depot spaces to store stacks of fanfold.

Compact EVO always selects the ideal size ABBE fanfold cardboard, resulting in minimal waste and maximum box processing speed.

Maximum Mechanical Speed:  
40 m/min

Cardboard Width:  
400mm - 1,400mm

Maximum Mechanical Speed:  
45 m/min

Cardboard Width  
400mm - 2,500mm





“The Panotec solution allowed us to reduce costs, optimise logistics and avoid damages to products during transport”

Pierre Luc Plunier  
Managing Director – Bic Sport



## NextMode Series

One of the fastest automatic box making machines in the industry.

The NextMode Series is suitable for high size flexibility production and massive batch production. It provides 1-6 depot spaces to store stacks of ABBE fanfold cardboard.

With exclusive Simulset™ technology, each cutting and creasing head is set up simultaneously; maximising throughput for highly varied box size production. The machine is available with single or dual axis heads, eliminating any minimum dimension limitation.

Maximum Mechanical Speed:  
48 m/min

Cardboard Width  
480mm - 2,500mm

---

### Optional Addons

1. Glueing and strapping
2. Measuring scanner
3. Scanveyor
4. Modular Automated Fanfold Stock Magazine
5. Labelling and Identification systems

---

### 1. E-gluer

Automated glueing station for slotted boxes.



---

### 2. Scanpack

Measuring station that detects the dimension or composition of products.

Automatically producing the right size packaging.



---

### 3. Scanveyor

Integrated station for dimensional measuring



Images used for illustrative purposes only

Powered by



## CMC Cartonwrap

Cartonwrap produces boxes from a simple and inexpensive corrugated fanfold in real-time, each one unique to the products being boxed.

The real-time format change is managed automatically through product recognition or directly from a database ensuring high flexibility of processing. High productivity with speeds of up to 15 boxes per minute. System can be expanded to add print systems for logos, trademarks or any other information directly to the box, further allowing each box to be unique. Labelling systems can be integrated according to shipping method needs.

### CartonWrap 1000

Maximum Mechanical Speed  
up to 1,000 boxes /hr

Cardboard Thickness  
3mm – 7mm

#### Box Dimensions

L: 150mm to 350mm  
W: 240mm to 600mm  
H: 25mm to 200mm

### CartonWrap XL

Maximum Mechanical Speed  
up to 1,000 boxes /hr

Cardboard Thickness  
3mm – 7mm

#### Box Dimensions

L: 150mm to 600mm  
W: 240mm to 800mm  
H: 30mm to 215mm

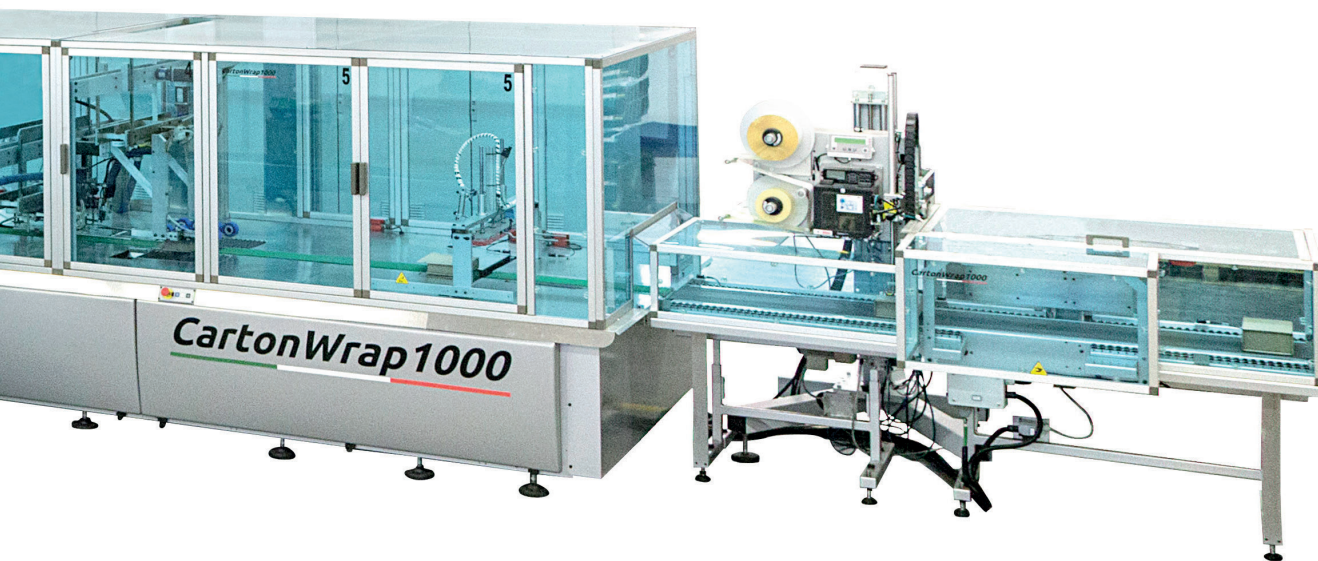
## High Tech, High Speed, High Volume.



“To keep our leading position, we must innovate. With this system we can continue to help our clients meeting the promise to their customers”

Jack Heijkans

Executive Director - Docdata Benelux



### The CMC Solution optional extras

#### Right Options for the Right Application.

A variety of extra options can be combined to CMC machine platforms to perfectly match any requirement.

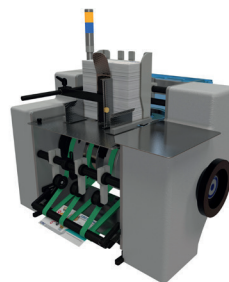
Optional equipment can also be retrofitted at a later stage.

#### Customise your solution with:

- ▶ Double Fanfold input
- ▶ Invoice Printer
- ▶ Sorters

#### 1. Catalogue Feeder

Feeds up to 4 catalogues, leaflets etc directly into the box



#### 2. Weigher

Check-weighing system can to be retrofitted either in the induct or output conveyor.



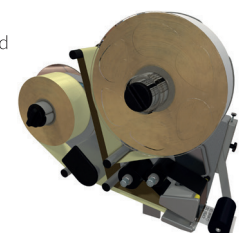
#### 3. Packvertising

Data Driven On-demand Packaging and Advertising.



#### 4. Labellers

Print and shipping labels to completed boxes.



more than  
**30%**

Products sold through e-commerce ship in wastefully oversized boxes that are on average 30-50% TOO BIG!



# Redefining productivity efficiencies

## How ABBE revolutionised Catch.com.au's packing and fulfilment process.

"It was crucial for us to find a reliable machine capable of working fast and reducing waste and damage," said Saar Davidi, Distribution Centre Manager, Catch.com.au.

Corrugated Cardboard manufacturer, ABBE recommended the CartonWrap machines from Italian on-demand packaging machine manufacturer CMC Machinery.

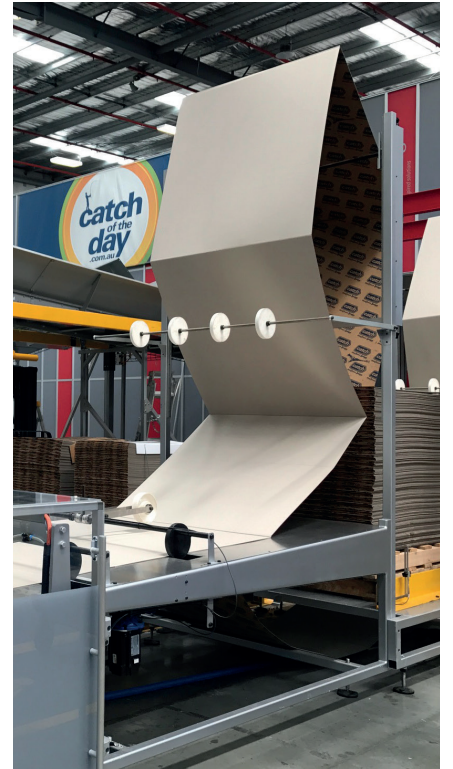
"The machine is just fantastic," said Davidi. "It 3D-scans the item or items to be packaged and makes a box to the exact size required, so we're not sending air. With other machines, we can specify variable box height, but CartonWrap creates a box with the ideal length, width and depth."

Eliminating void has enabled Catch.com.au to reduce the number of forklift movements, Australia Post unique loading devices (ULDs) and truck loads taking place each day.

In addition to producing a box optimised for its contents, the machine can also drop the items in, insert marketing materials, seal the box and affix the shipping label.



**OVER 40%  
reduction in  
packaging  
volume, with  
CartonWrap**



---

With ABBE as your corrugated cardboard packaging supplier, you are assured of a project that will run efficiently, effortlessly and professionally.

# Inspiring packaging solutions

## Cutting edge and end-to-end

You can trust that working with ABBE means taking advantage of our packaging expertise in manufacturing technology, design, materials and engineering.

With over 25 years of industry experience we have been delighted to be part of our customers' growth.

From humble beginnings to successful national businesses, ABBE continues to evolve with our customers through reliable service and innovative packaging solutions.



## CUSTOMISED SOLUTIONS

---

Plain & Printed Cartons

---

E-commerce Packaging & Mailers

---

Customised Die-cut Packaging

---

POS Displays

---

Shelf-ready Packaging

---

Thermal Packaging – Chilltainers

---

Timber Pallets & Crates

---



## The ABBE Promise

---

### Cost-effective

You will get the right solution in print, design and material to suit your budget, while seamlessly scaling with your business needs.

---

### Quality

The integrity is in the structural design and manufacturing process, which means we deliver what we promise.

---

### Speed to Market

At ABBE we pride ourselves on fast turnaround, our dedicated and energetic team has complete commitment to working dynamically to meet your toughest deadlines.

---

### Versatility

Whether you choose impressive Digital print, Flexographic or premium Lithographic printing, our trusted experts will work with you to recommend the best print solution for your product's packaging.

---

Trusted material and product experts

---

Seamless end-to-end journey

---

Cutting edge technology and process

---



# Unsurpassed Capabilities

**ABBE has the skills and facilities on hand to produce innovative and impressive corrugated cardboard solutions for various markets.**

## Designers and Graphic Artists



Sand Box is ABBE's in-house end-to-end solutions studio, delivering a seamless concept, design and production journey. Whether you have your own artwork or you need expert and thoughtful visual design, ABBE has a solution for every project.

## Corrugator



ABBE makes all of its own corrugated cardboard in many different specifications and paper grades.

Our flute profiles include B, C, E, BC and EB. We can produce a sheet up to 2480 x 5000mm long.





### Flexographic Printers



Our flexographic printing ranges from the simplest one colour “this way up” print to full colour graphic displays.

High quality flexo printing can now produce surprising complexity and is filling a void between standard flexo and lithographic print.

### Digital Printer



By using digital printing, embrace boundless possibilities with versioning and customisation. Impression offers ground-breaking technology for creating the perfect cardboard packaging, cartons and displays.

### Lithographic Printers



Our multi-colour offset printing presses can apply speciality finishing, such as UV varnish, in-line with a printed sheet size up to 1020 x 1420mm.

Litho printed products provide excellent image quality and relatively low costs in large print runs.

### Specialty Gluers



Our large format Gluing machines are capable of gluing large items like dump bins and display bases in a single piece.

### Large format Die-cutter



Our die-cutting capabilities are second to none; we can either flat-bed die-cut to a massive 1650 x 2500mm or high speed rotary cut to 1575 x 2800mm.

### Handwork and Distribution



With our extensive equipment and experience, ABBE can assemble and pack out the most complex of displays. Delivered on time and with care by our fleet of vehicles.



Exceptional quality without compromise.

# A custom home for your products

Diverse packaging solutions for all industries and markets.

Learn more at [www.abbe.com.au](http://www.abbe.com.au)  
or call us at 03 9301 8800





---

Authorised distributors  
of Automated Packaging  
Equipment



**ABBE CORRUGATED PTY LTD**  
*CORRUGATED CARDBOARD PACKAGING*

VIC 03 9301 8800 [www.abbe.com.au](http://www.abbe.com.au)  
sales@abbe.com.au



**AUSTCOR PACKAGING PTY LTD**  
*CORRUGATED CARDBOARD PACKAGING*

NSW 02 9757 7555 [www.austcor.com](http://www.austcor.com)  
sales@austcor.com



**ABBE INDUSTRIAL PACKAGING PTY LTD**  
*CORRUGATED CARDBOARD & TIMBER PACKAGING*

VIC 03 9301 8800 [www.abbe.com.au](http://www.abbe.com.au)  
sales@abbe.com.au